








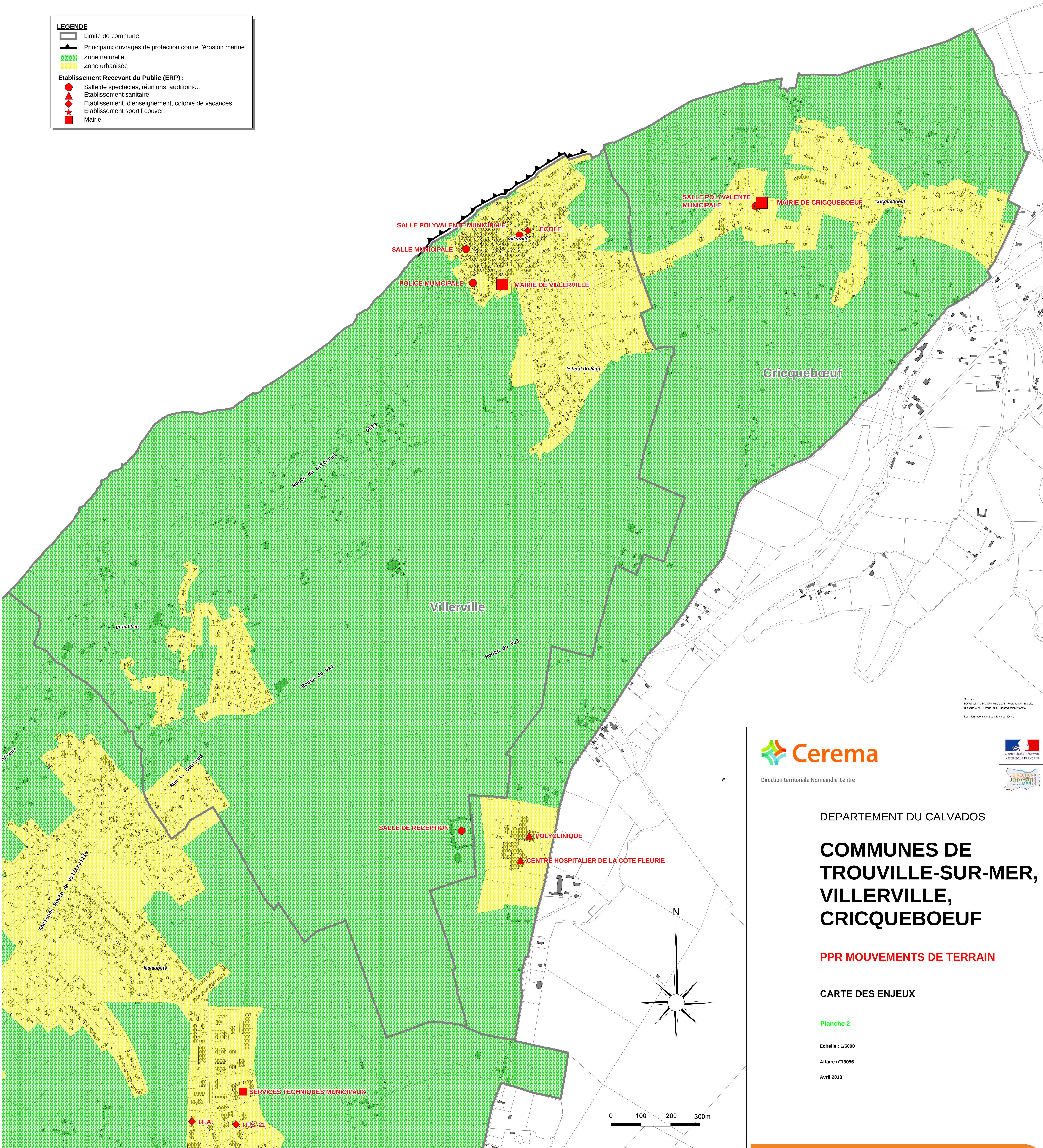


**LEGENDE**

-  Limite de commune
-  Principaux ouvrages de protection contre l'érosion marine
-  Zone naturelle
-  Zone urbanisée

**Etablissement Recevant du Public (ERP) :**

-  Salle de spectacles, réunions, auditions...
-  Etablissement sanitaire
-  Etablissement d'enseignement, colonie de vacances
-  Etablissement sportif couvert
-  Mairie



Source :  
BD Carthage 100 000 © IGN Paris 2008 - Reproduction interdite  
M. J. L. 2008 Paris 2008 - Reproduction interdite  
Les informations n'ont pas de valeur légale



DEPARTEMENT DU CALVADOS

**COMMUNES DE  
TROUVILLE-SUR-MER,  
VILLERVILLE,  
CRICQUEBOEUF**

**PPR MOUVEMENTS DE TERRAIN**

**CARTE DES ENJEUX**

Planche 2

Echelle : 1/5000

Affaire n°13056

Avril 2018