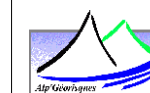




**Cartographie des aléas littoraux
dans le cadre des futurs PPRL
Bessin et Dives-Orne**

**Migration Dunaire - 1947
Secteur Dives - Orne**

12107_059_150424_Migration_dunaire_1947_DivesOrne Carte 59
Date: 24/04/2015 Planche: 1/4



Coveliersstraat 15
2600 Antwerpen
Tel +32 3 270 92 20
Fax +32 3 235 67 11
E-mail: info@imdc.be

Légende

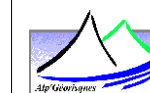
- Brèche
- Commune
- Occupation du sol (1947)**
- Zone urbanisée
- Végétation dense
- Marais
- Cordon dunaire
- Dune avec protection par un perré en béton

0 250 500 750 1,000 m

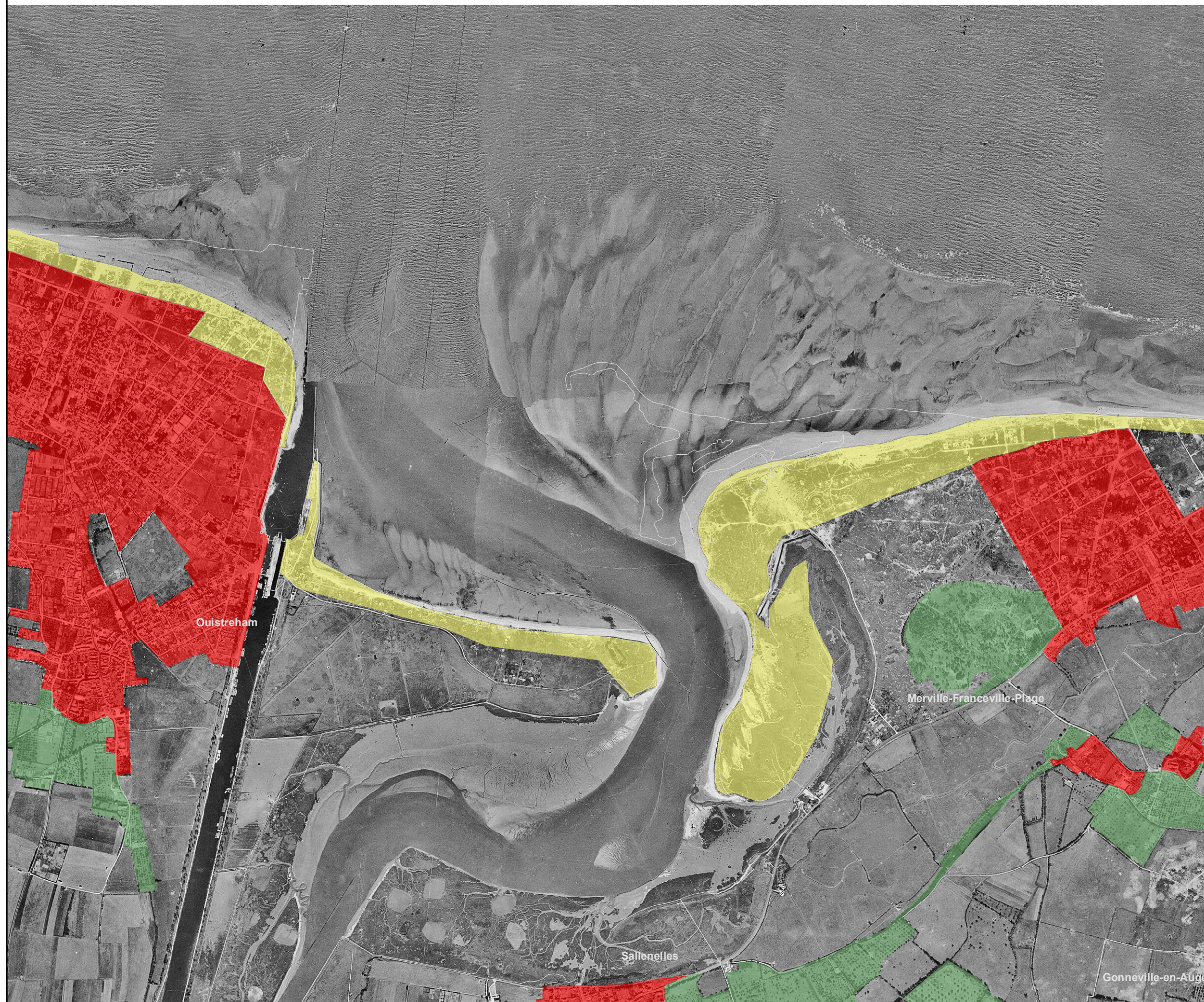
**Cartographie des aléas littoraux
dans le cadre des futurs PPRL
Bessin et Dives-Orne**

**Migration Dunaire - 1947
Secteur Dives - Orne**








12107_059_150424_Migration_dunaire_1947_DivesOrne Carte 59
Date: 24/04/2015 Planche: 2/4




Coveliersstraat 15
2600 Antwerpen
Tel +32 3 270 92 20
Fax +32 3 235 67 11
E-mail: info@imdc.be



Légende

-  Brèche
-  Commune
- Occupation du sol (1947)**
-  Zone urbanisée
-  Végétation dense
-  Marais
-  Cordon dunaire
-  Dune avec protection par un perré en béton

0 250 500 750 1,000 m



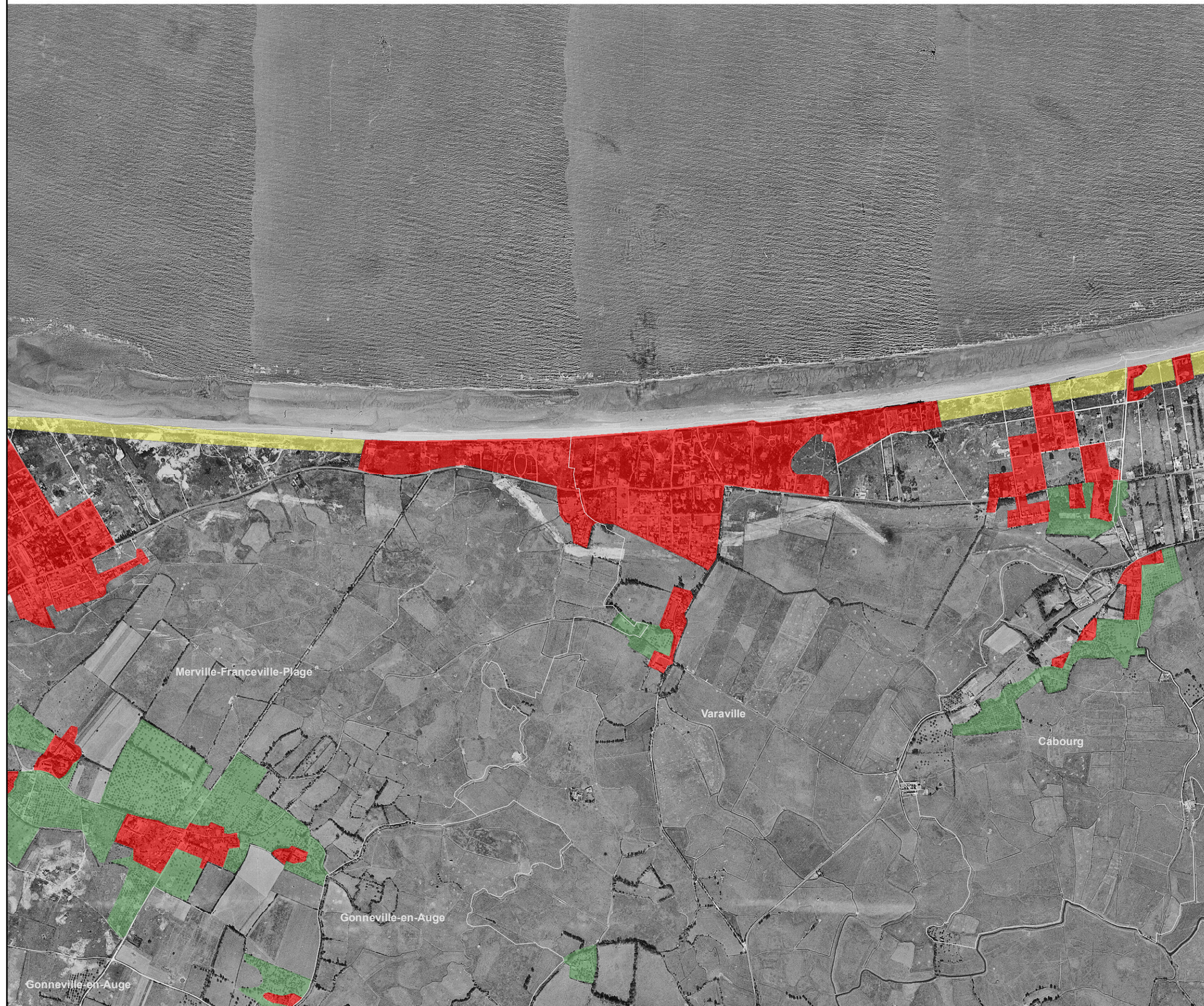
**Cartographie des aléas littoraux
dans le cadre des futurs PPRL
Bessin et Dives-Orne**

**Migration Dunaire - 1947
Secteur Dives - Orne**








12107_059_150424_Migration_dunaire_1947_DivesOrne Carte 59
Date: 24/04/2015 Planche: 3/4




Coveliersstraat 15
2600 Antwerpen
Tel +32 3 270 92 20
Fax +32 3 235 67 11
E-mail: info@imdc.be

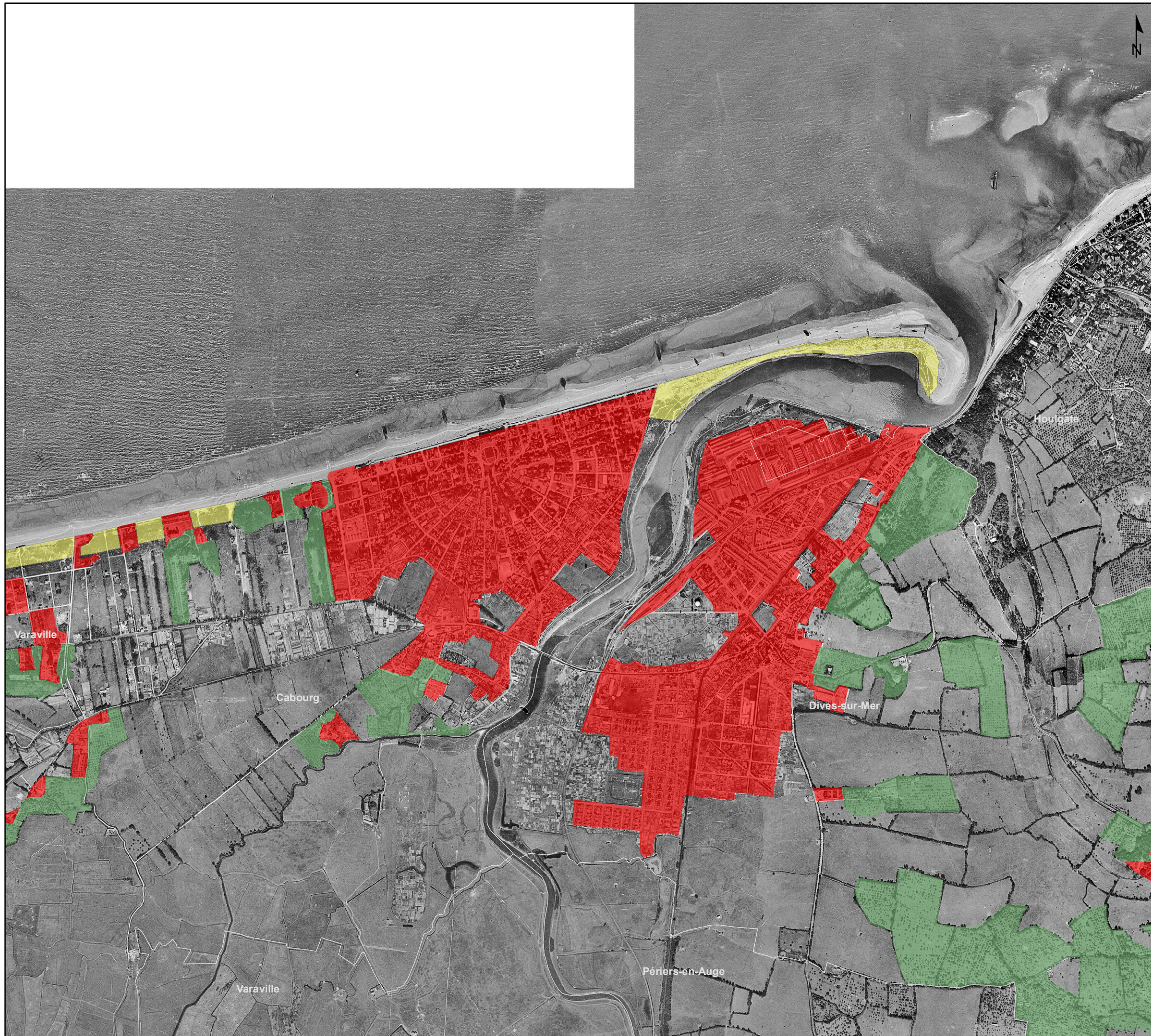


Légende

-  Brèche
-  Commune
- Occupation du sol (1947)**
-  Zone urbanisée
-  Végétation dense
-  Marais
-  Cordon dunaire
-  Dune avec protection par un perré en béton

0 250 500 750 1,000 m

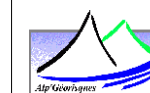




**Cartographie des aléas littoraux
 dans le cadre des futurs PPRL
 Bessin et Dives-Orne**








**Migration Dunaire - 1947
 Secteur Dives - Orne**

12107_059_150424_Migration_dunaire_1947_DivesOrne Carte 59
 Date: 24/04/2015 Planche: 4/4



Coveliersstraat 15
 2600 Antwerpen
 Tel +32 3 270 92 20
 Fax +32 3 235 67 11
 E-mail: info@imdc.be

Légende

-  Brèche
-  Commune
- Occupation du sol (1947)**
-  Zone urbanisée
-  Végétation dense
-  Marais
-  Cordon dunaire
-  Dune avec protection par un perré en béton

